

# J-CTO SCORE SHEET

Version 1.0

## Variables and definitions

### Tapered



### Blunt



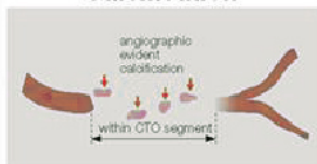
Entry with any tapered tip or dimple indicating direction of true lumen is categorized as "tapered".

### Entry shape

- ☐ Tapered (0)  
☐ Blunt (1)

point

### Calcification



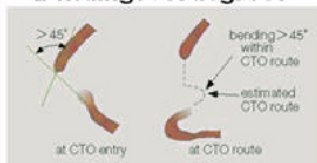
Regardless of severity, 1 point is assigned if any evident calcification is detected within the CTO segment.

### Calcification

- ☐ Absence (0)  
☐ Presence (1)

point

### Bending >45degrees



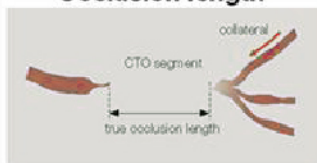
One point is assigned if bending > 45 degrees is detected within the CTO segment. Any tortuosity separated from the CTO segment is excluded from this assessment.

### Bending >45°

- ☐ Absence (0)  
☐ Presence (1)

point

### Occlusion length



Using good collateral images, try to measure "true" distance of occlusion, which tends to be shorter than the first impression.

### Occl.Length

- ☐ <20mm (0)  
☐ ≥20mm (1)

point

### Re-try lesion

Is this Re-try (2<sup>nd</sup> attempt) lesion ? (previously attempted but failed)

### Re-try lesion

- ☐ No (0)  
☐ Yes (1)

point

Category of difficulty (total point)

- ☐ easy (0) ☐ Intermediate (1)  
☐ difficult (2) ☐ very difficult (≥3)

Total



points