

Managing Failure When to Stop? How/When to Restart

David Daniels, MD

Disclosure Statement of Financial Interest

Within the past 12 months, I or my spouse/partner have had a financial interest/arrangement or affiliation with the organization(s) listed below.

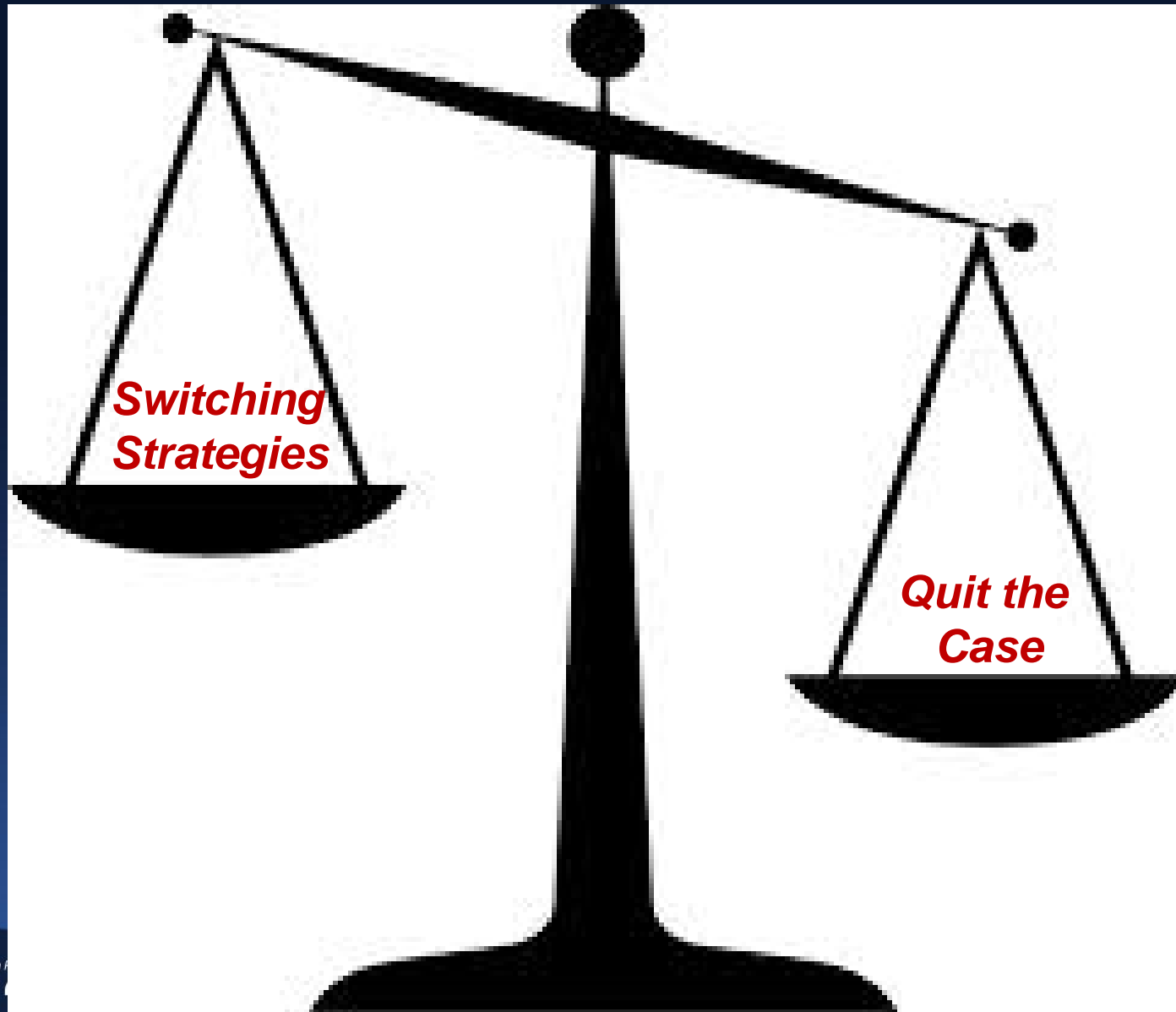
Affiliation/Financial Relationship

- Consulting Fees/Honoraria

Company

- Boston Scientific, Asahi Intecc USA


Failing



When to Quit?

- **Futility/Operator Fatigue**
- **Radiation limits**
- **Contrast limits**
- **Complications?**

When to Quit?

- **Futility/Operator Fatigue**
 - **Radiation limits**
 - **Contrast limits**
 - **Complications?**
- 
- **5 G no progress stop**
 - **7 G not true lumen stop**
 - **10 G stop unless ongoing complication**

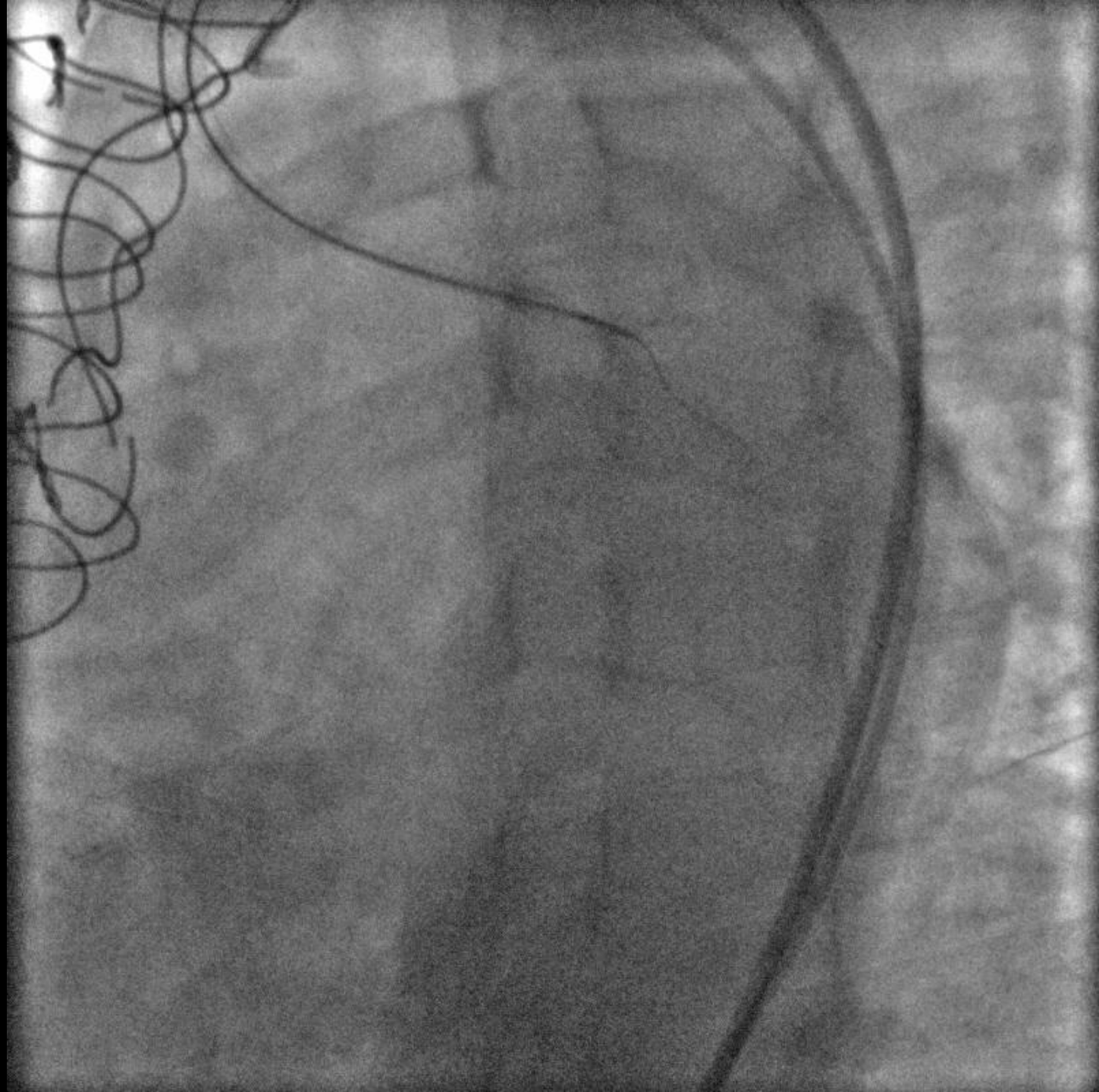
When to Quit?

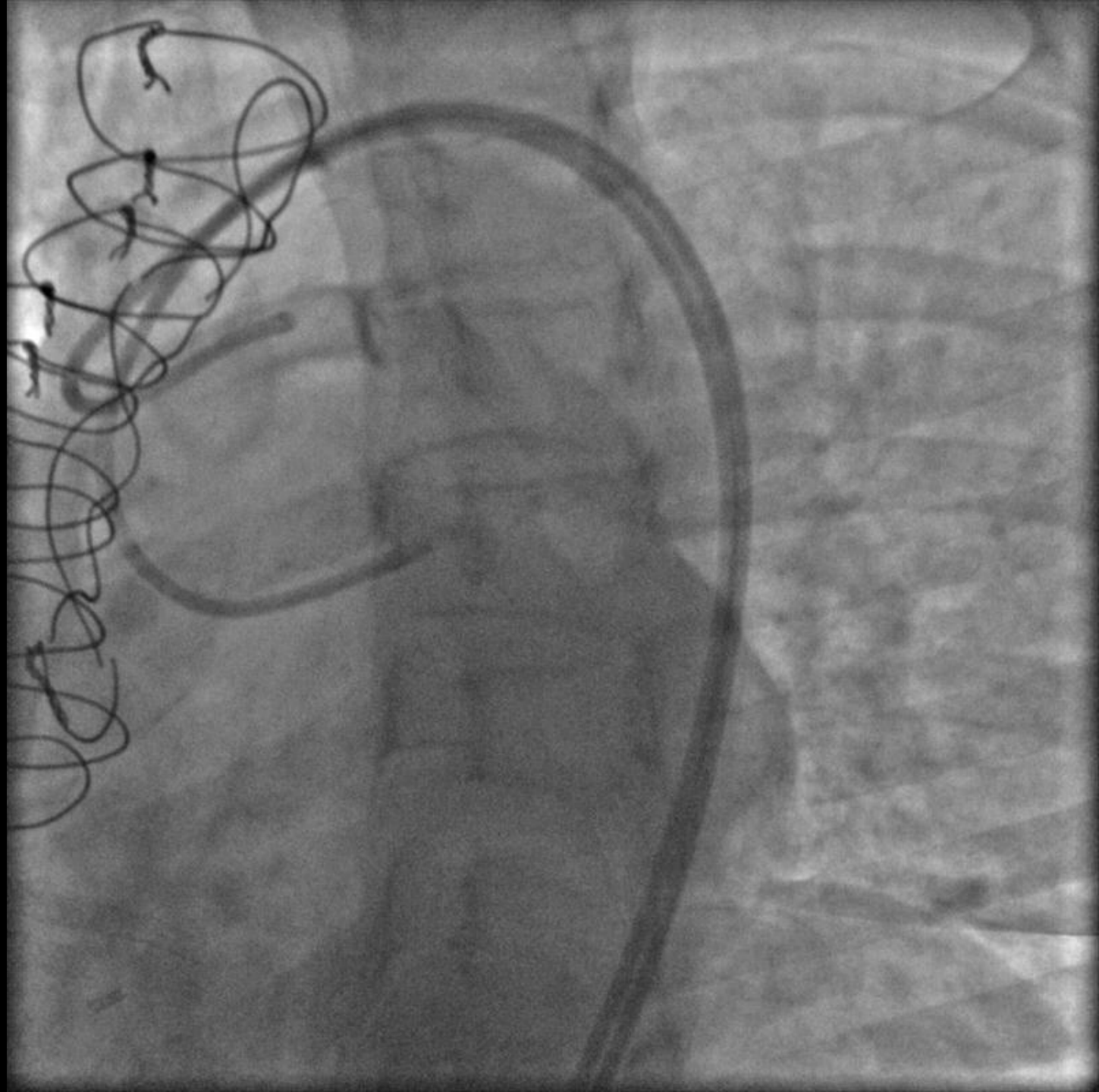
- Futility/Operator Fatigue
- Radiation limits
- Contrast limits
- Complications?

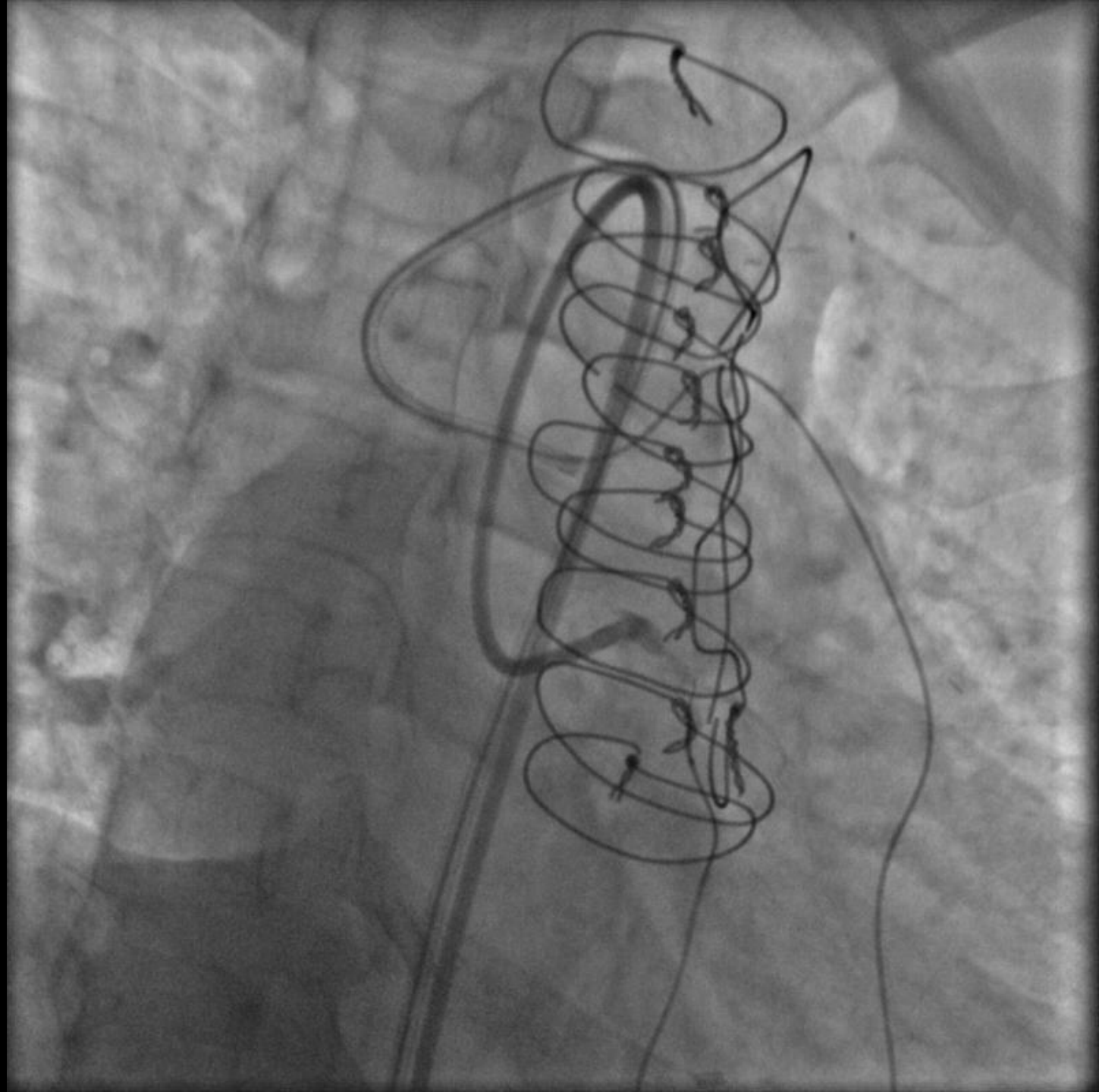


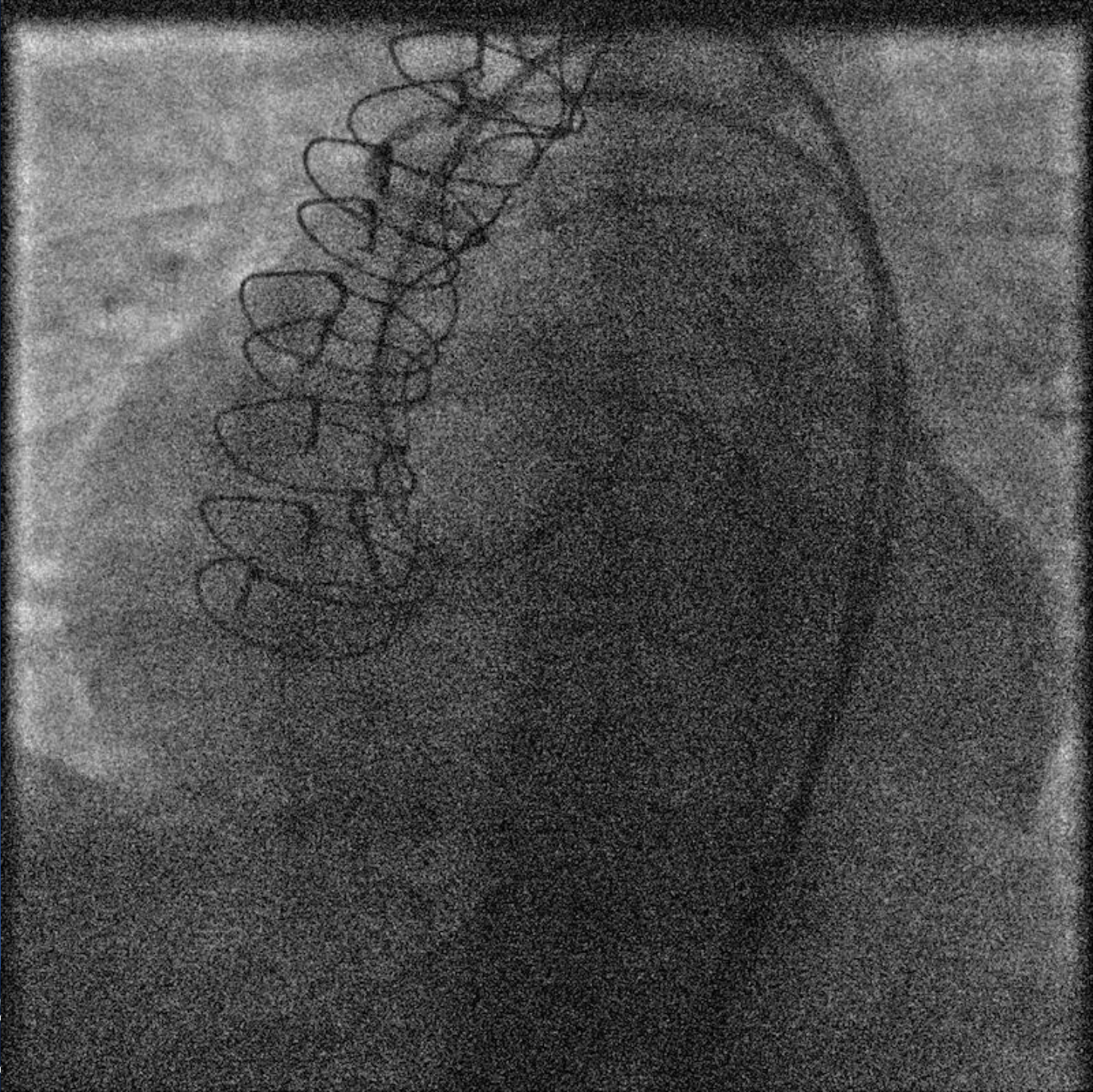
5 x Weight (Kg)/ Cr

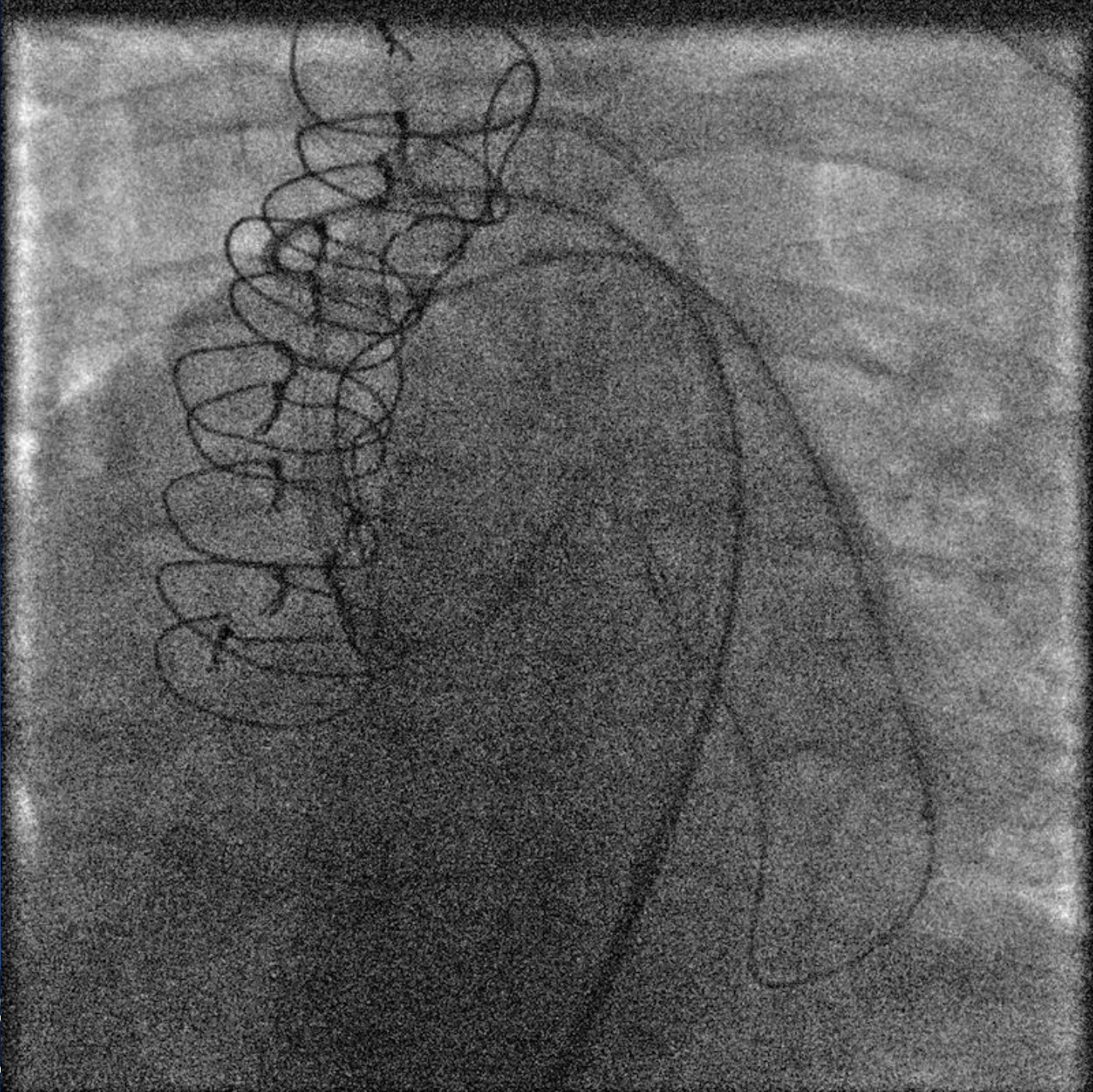


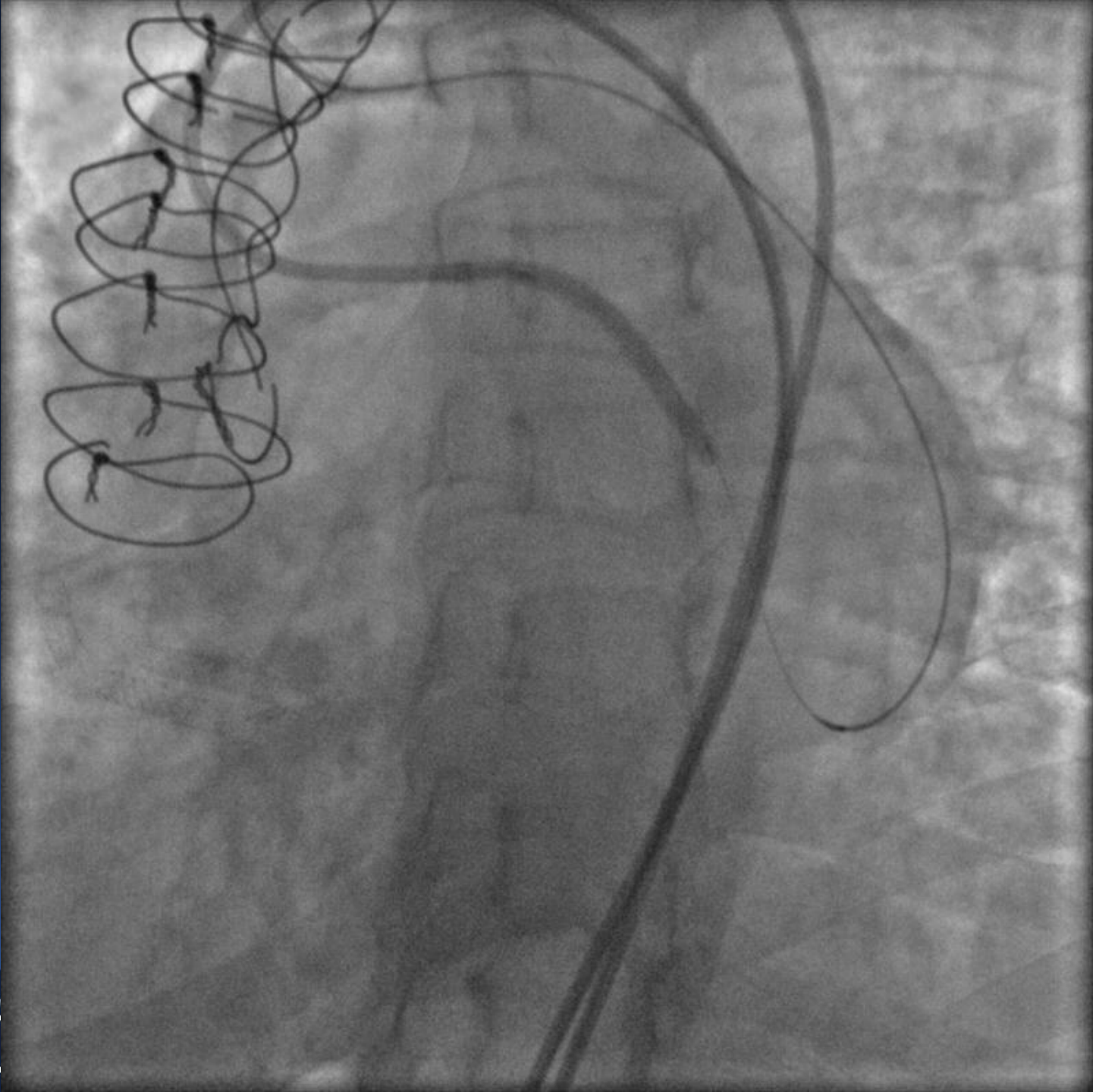


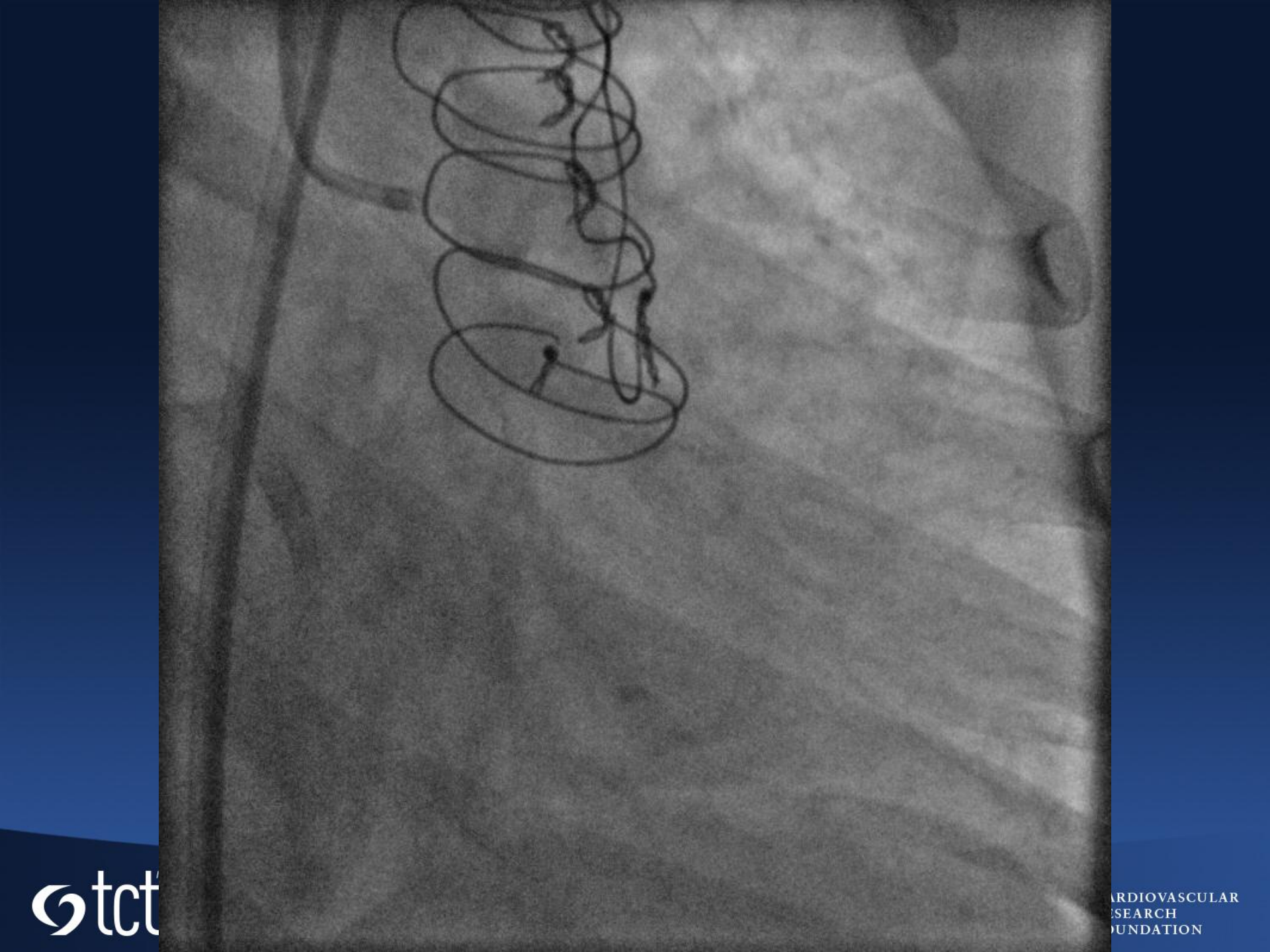


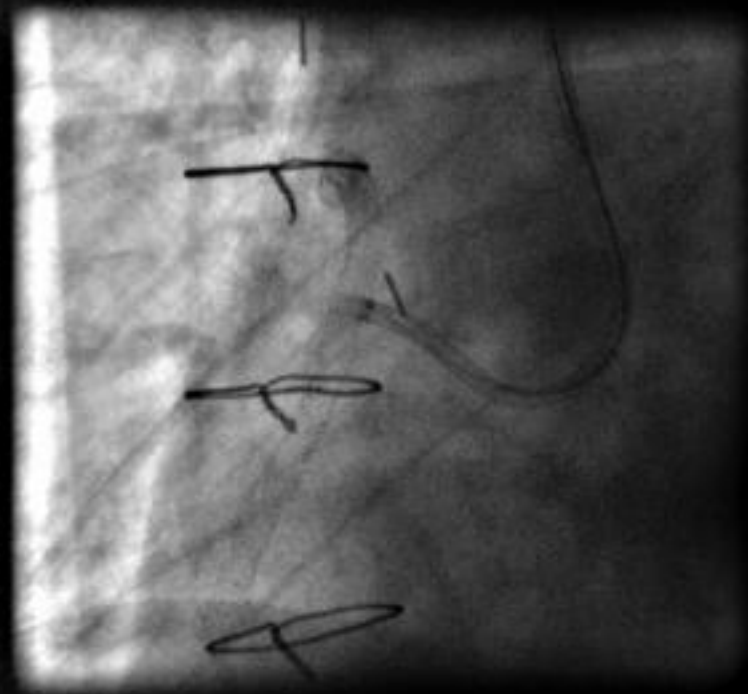


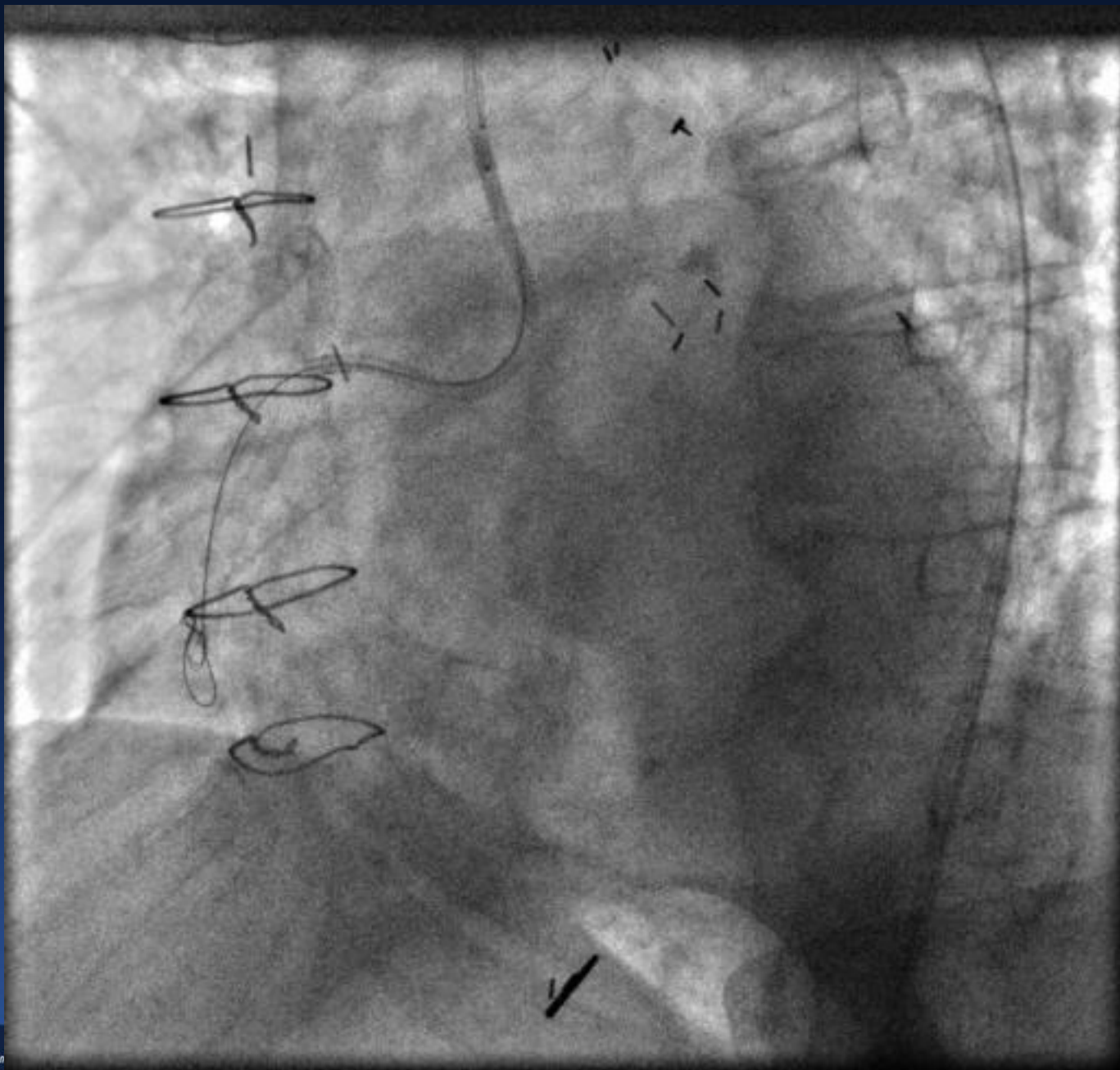




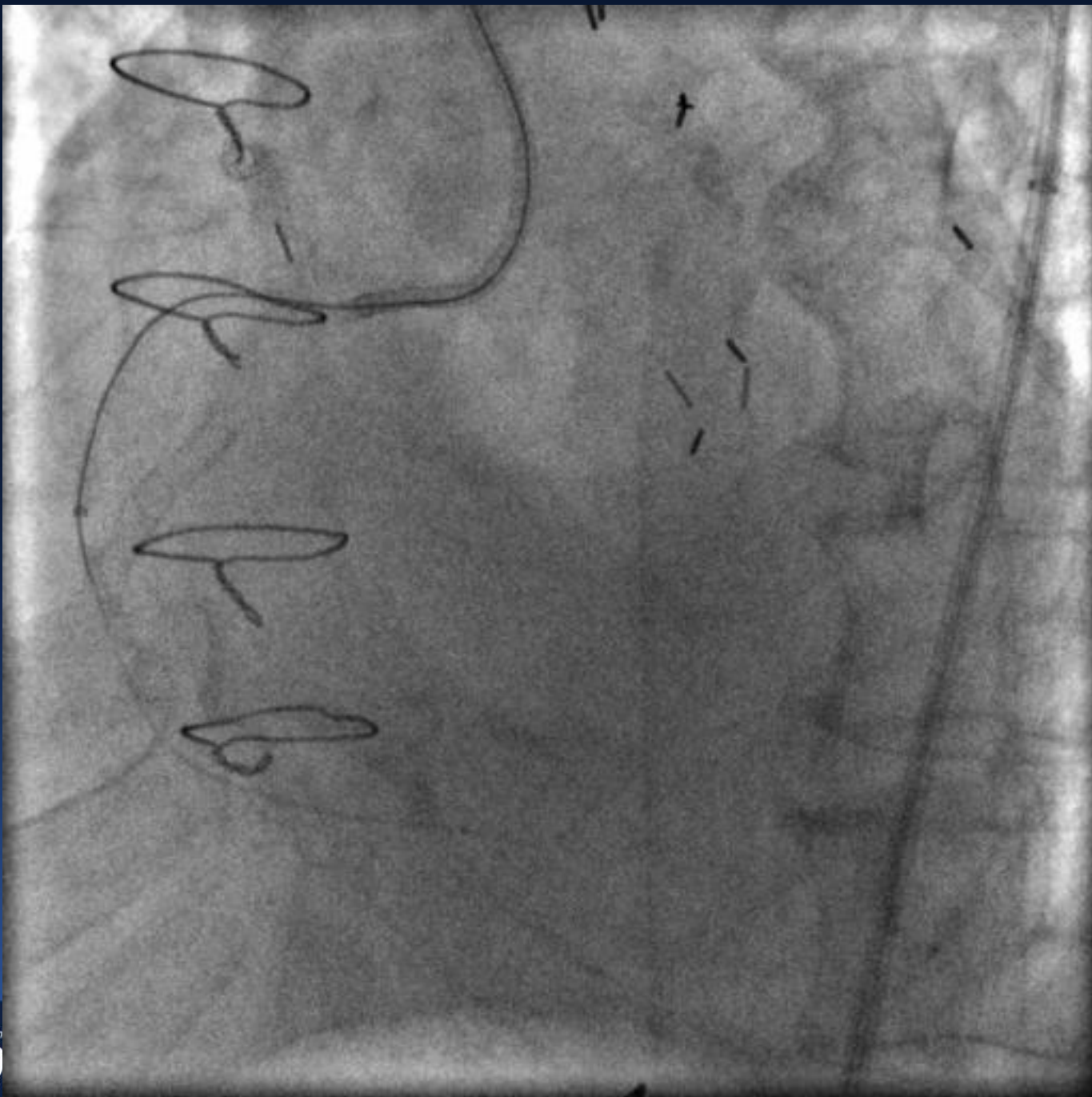


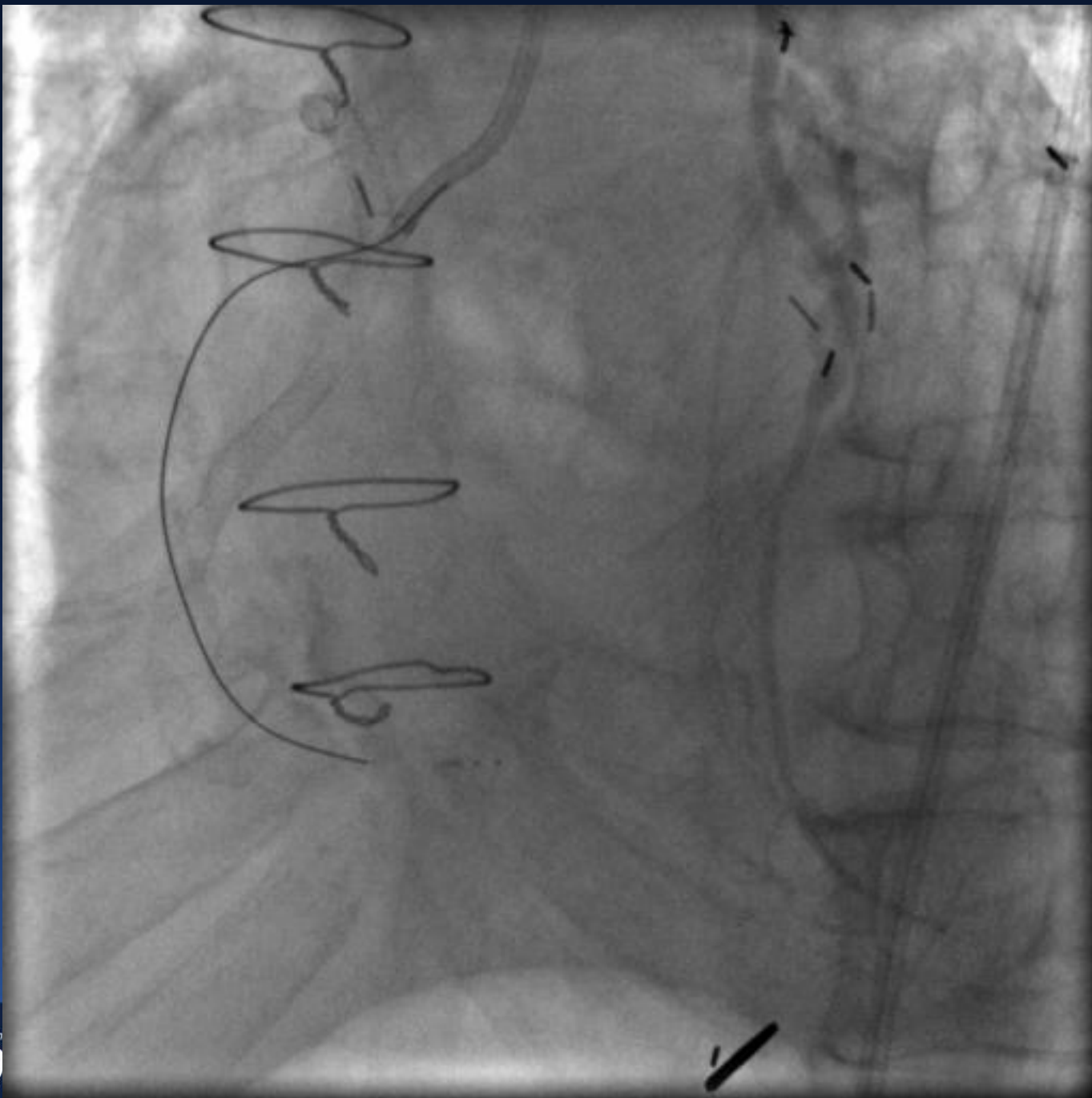




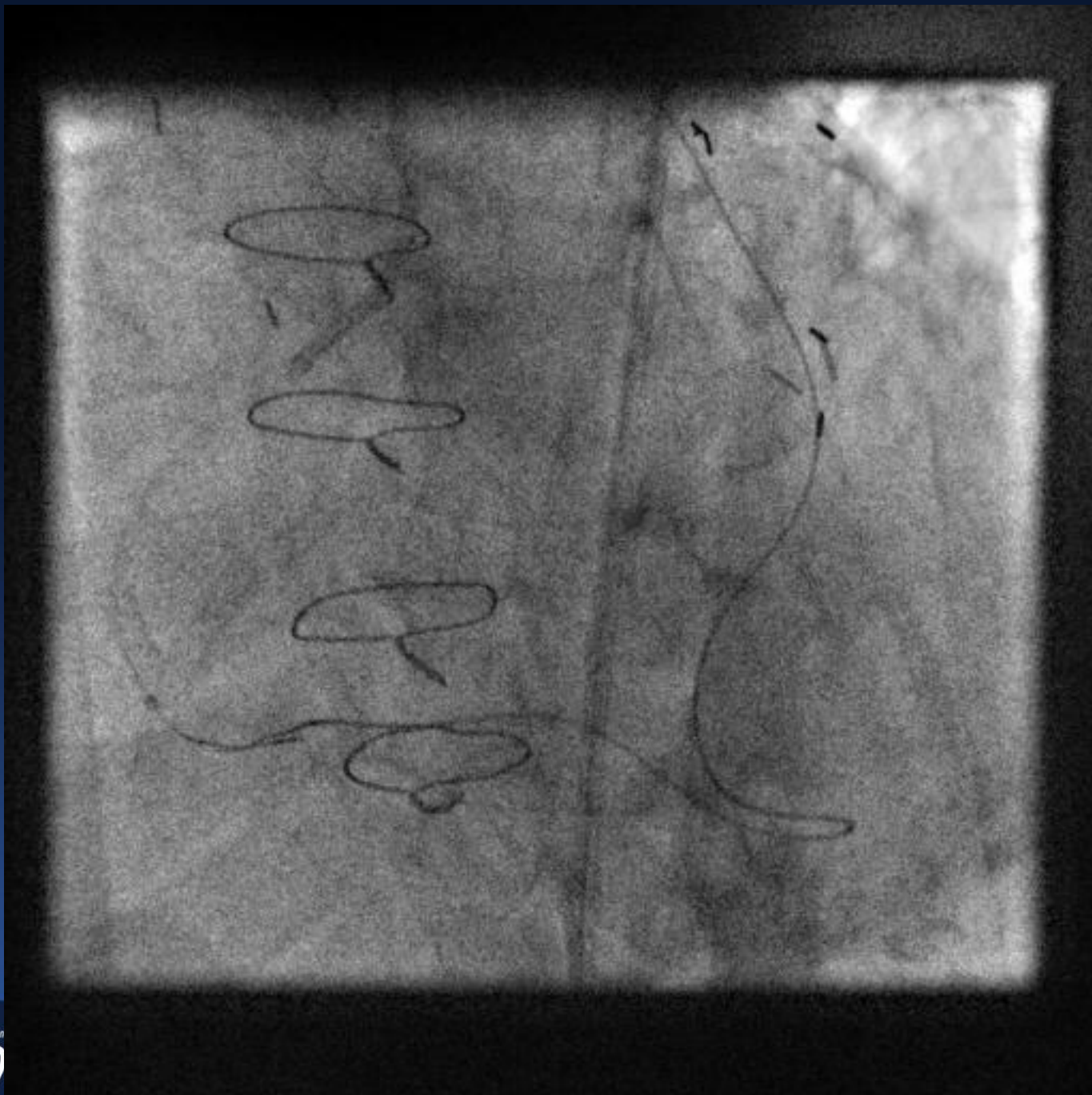


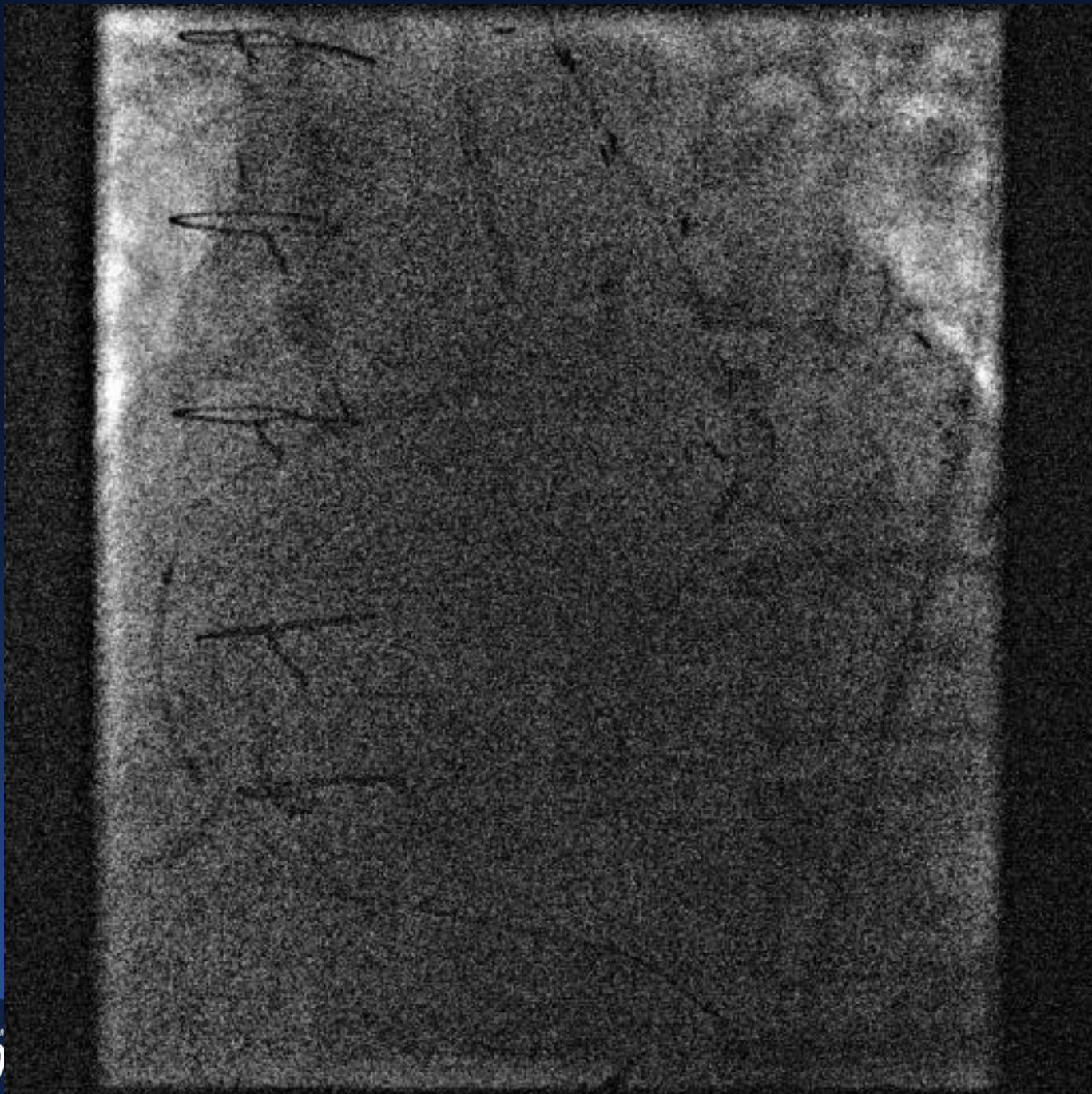




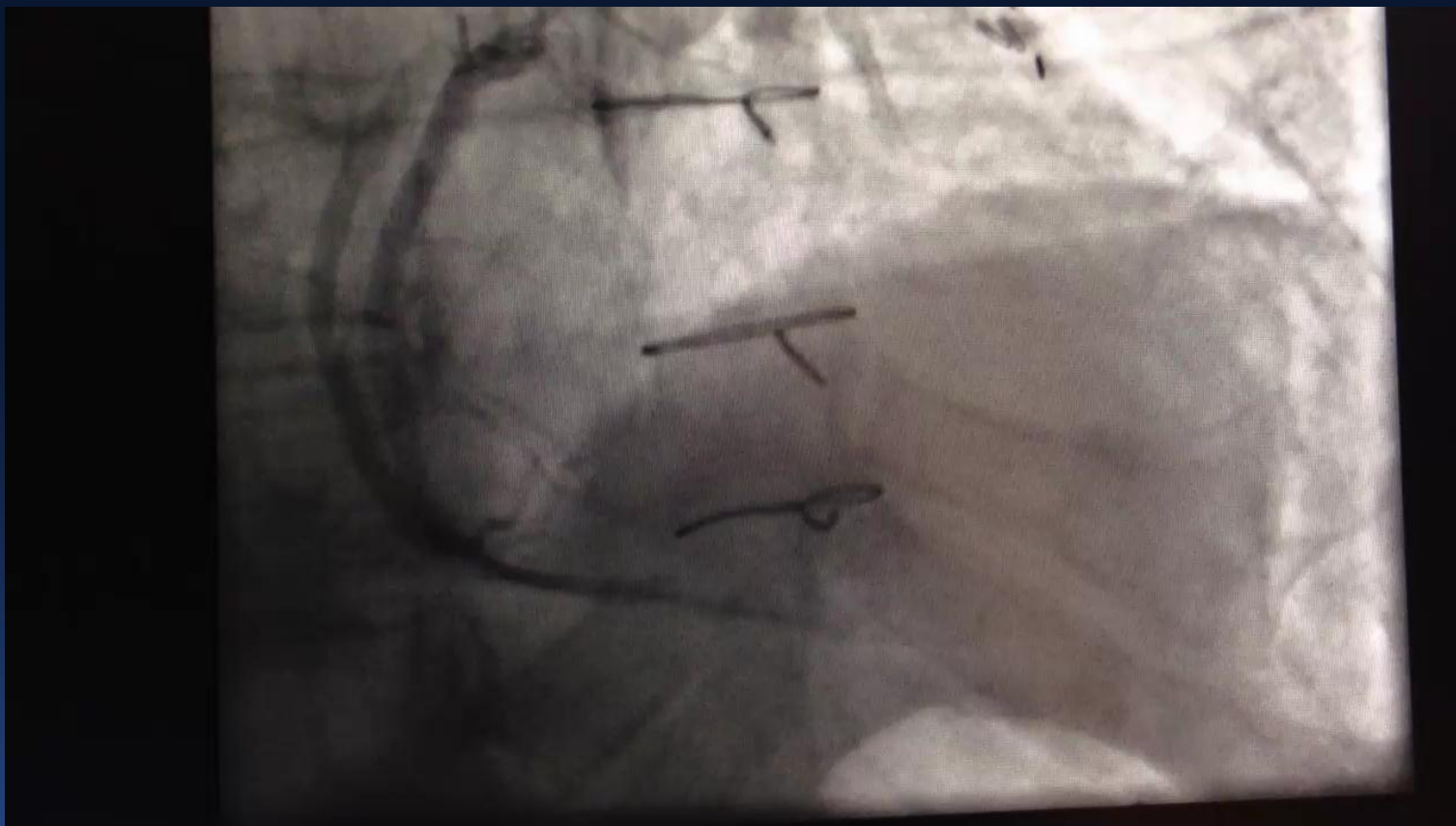


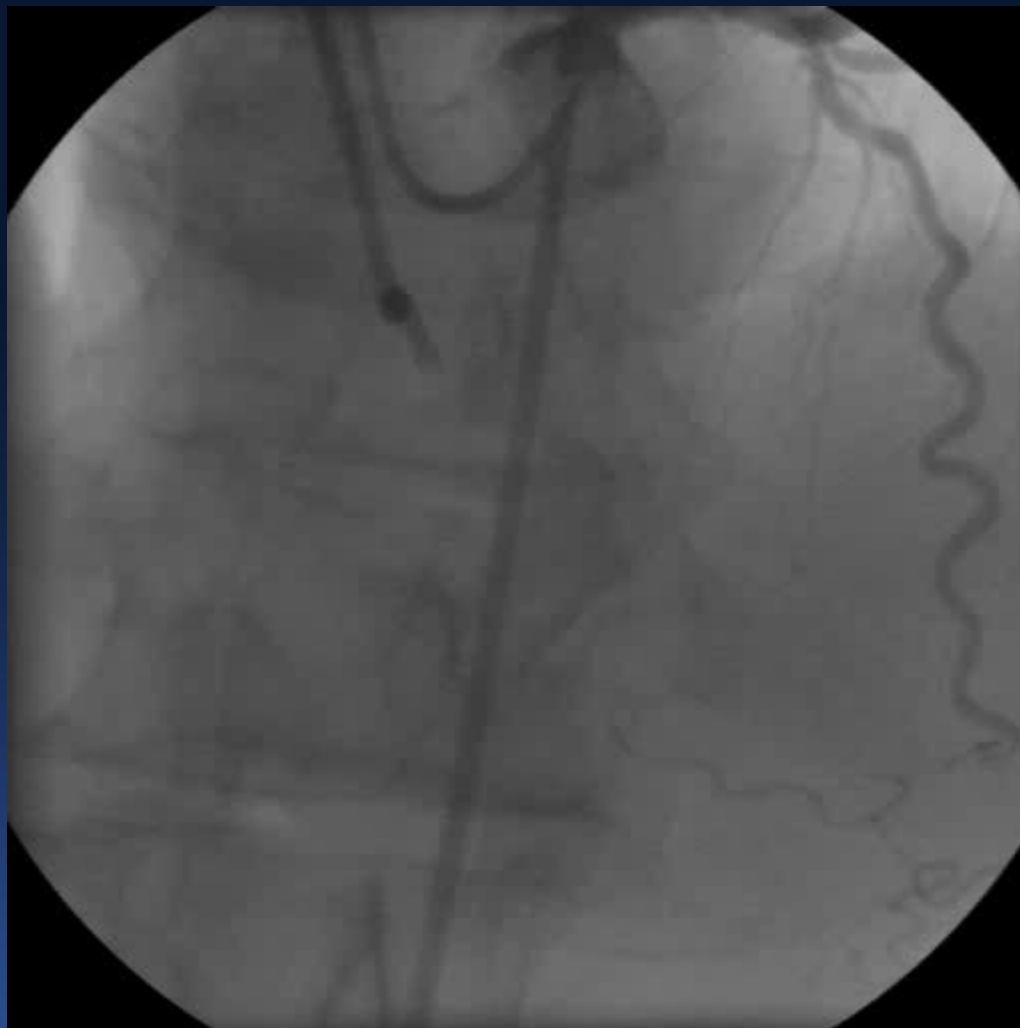




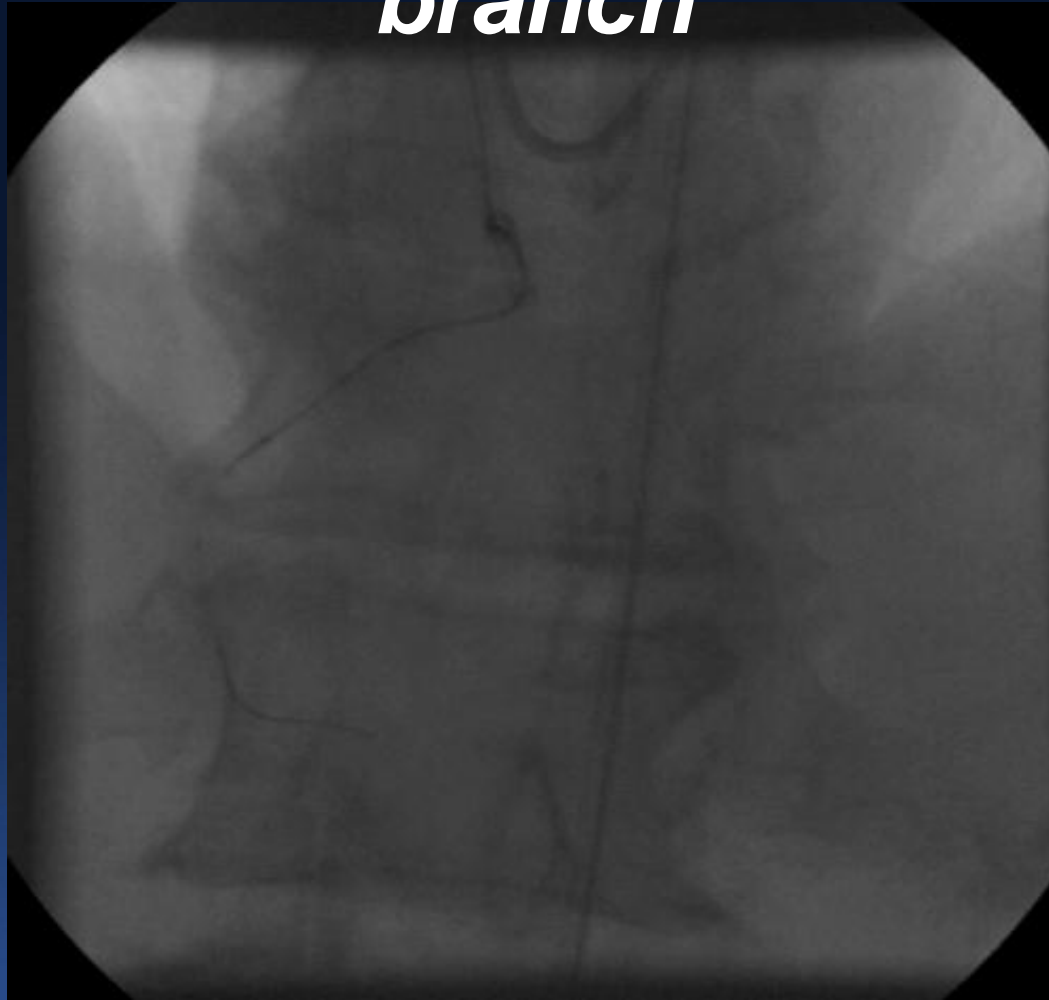


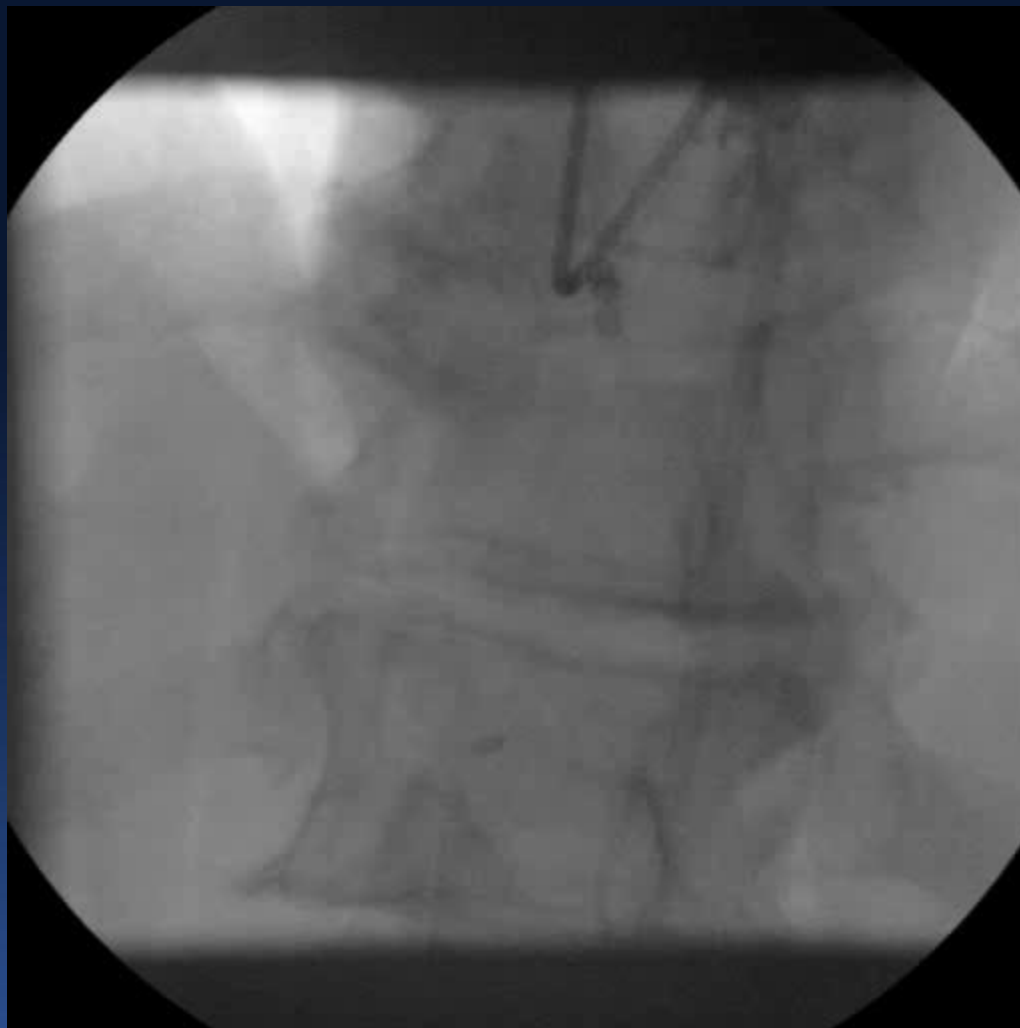


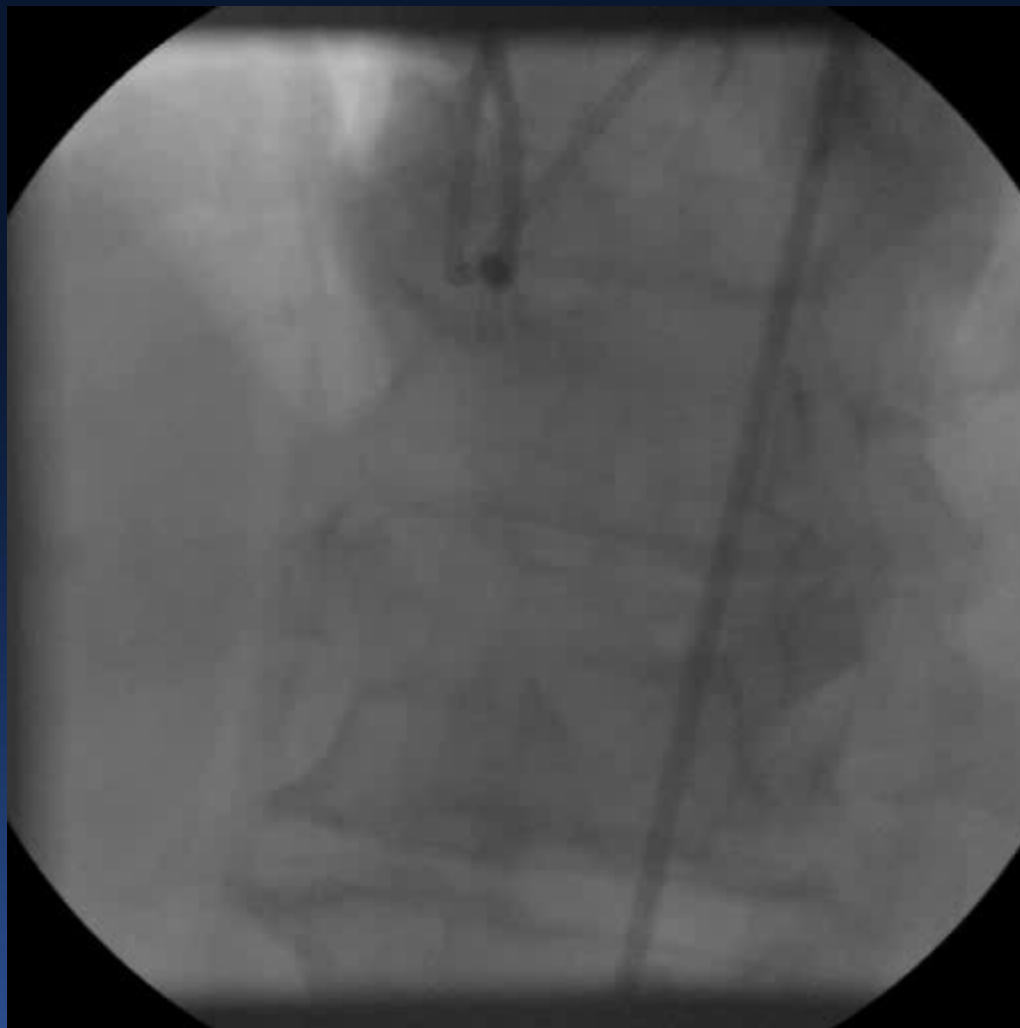




ADR stalls - cannot pass RV branch











***Again, patent channel wired in a few seconds
Stenting procedure completed in 20 minutes
Patient symptom free at follow-up***

Image size: 512 x 512
View: RAO 30.00°
HL: 120 WW: 255

3100004 (55 y, 54 / 3)
-- CARDIO 03.14
6
1



Zoom: 135% Angle: 0
Im: 1/132
Uncompressed
PostProc: HEB

8/5/14 6:50:24 PM
Matrix: P13025X

CARDIOVASCULAR
RESEARCH
FOUNDATION



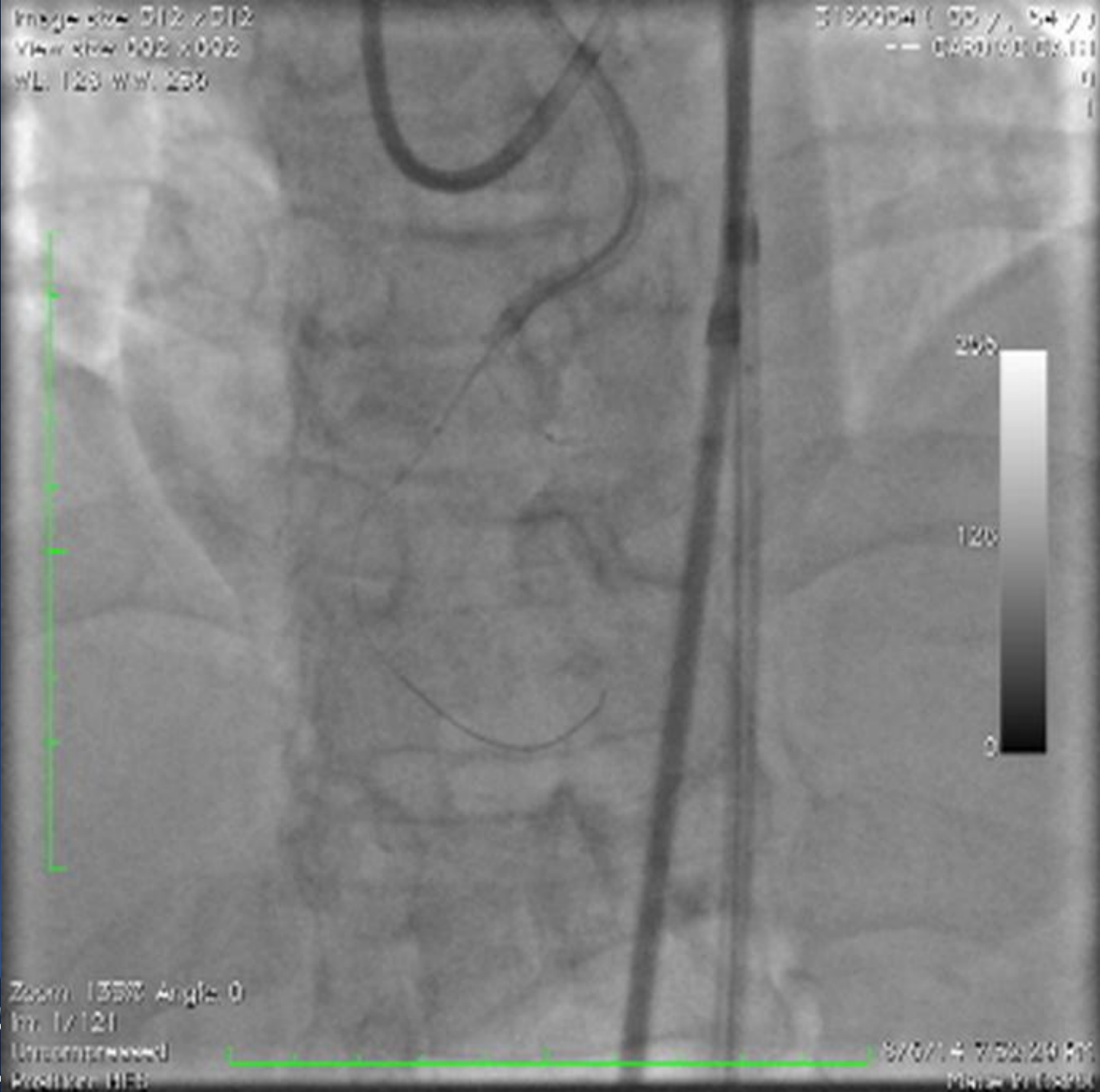
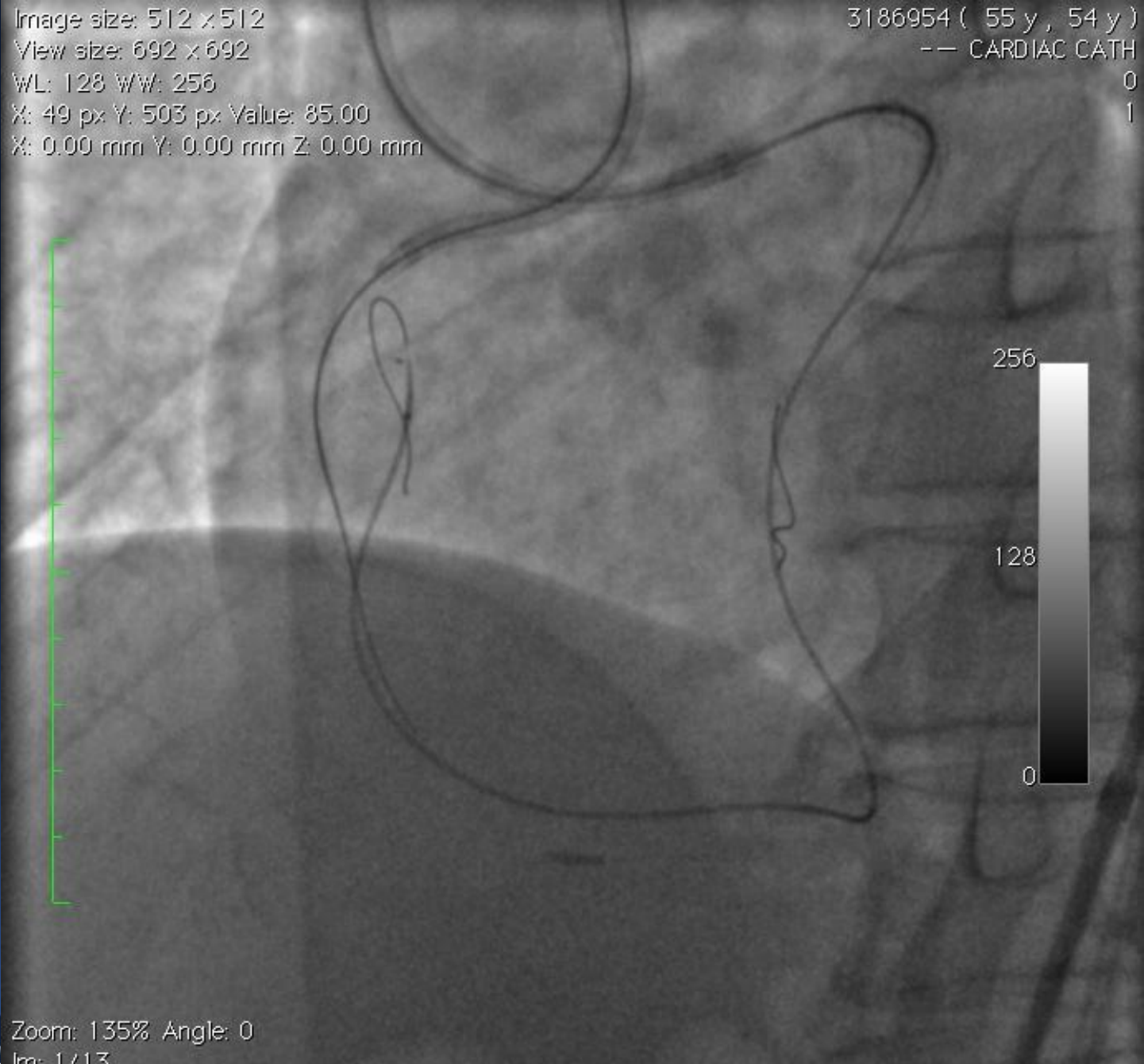
[illegible]

Image size: 512 x 512
View size: 692 x 692
WL: 128 WW: 256
X: 49 px Y: 503 px Value: 85.00
X: 0.00 mm Y: 0.00 mm Z: 0.00 mm

3186954 (55 y , 54 y)
-- CARDIAC CATH
0
1



Zoom: 135% Angle: 0
Im: 1/13
Uncompressed
Position: HFS

8/6/14 8:33:06 PM
Made In Osirix

Image size: 512 x 512
View: cine 100 x 1000
W/L: 120 W/W: 250

3180004 (50 / 1, 54 / 1)
-- CARRON 03.14

Zoom: 135% Angle: 0
Im: 1/01
Uncompressed
Prodken HEB

8/25/14 0:48:21 PM
MNHEN 0100000

CARDIOVASCULAR
RESEARCH
FOUNDATION



Image size: 512 x 512
View: Short Axis 2002
WL: 120 WW: 255

31800541 (55 y, 54 y)
-- CARDIAC CATH
0
1



Zoom: 135% Angle: 0
Im: 1/41
Uncompressed
Pixel: 1151

8/6/14 9:55:00 AM
Mark: 1151000

CARDIOVASCULAR
RESEARCH
FOUNDATION



CARDIOVASCULAR
 RESEARCH
 FOUNDATION

When to quit procedure

- **Futility or operator fatigue (consider investment)**
- **Complication that could be made better (femoral bleeding)**
- **Radiation limits**
- **Contrast limits**

When to Quit Strategy

- **Stalling or Futility when other options exist**
- **Knowing how long to invest in a particular approach is the art of CTO PCI**

When to Forge On

- **When a complication is occurring that you must intervene on before bugging out**
- **When the benefits to the patient outweigh the risks and the situation does not meet the test for futility**

